

## Previous Meeting

Our Christmas meeting was held on 15<sup>th</sup> November and well attended. Members had the opportunity to purchase the wonderful Ikebana containers generously donated by Monica Wawn and the son of Betty Sands – long-serving former members of Sydney Chapter. One of the beautiful containers was the coveted raffle prize, won by Masae Ako.

The highlight of the meeting was a beautiful demonstration by Hiroko Prado, Sogetsu School which followed a sumptuous special morning tea.



Members enjoying the demonstration



Hiroko Prado, Sogetsu School  
with her arrangement



## FOLLOWING MEETING – TRADITIONAL DAY – THURSDAY, 21 MARCH

Our program will include a display of our Chapter artefacts. Details to follow.

### CHANGE OF ADDRESS FOR MEMBERS

Unfortunately some of our present/past members have changed their address and moved into retirement/nursing homes. If you would like to be in contact with them please contact Faye Brock on

0413 564 256 for details:

Robyn Temple-Smith

Monica Wawn

Kath Chate

Janet Mortimer has been very ill



## Ikebana International Sydney Chapter #36 Inc

Meeting at Chatswood Bowling  
Club, 655 Pacific Highway,  
Chatswood

**GENERAL MEETING**  
**THURSDAY, 21 FEBRUARY 2019**  
**ORIGAMI WORKSHOP**  
**SALE OF IKEBANA CONTAINERS**

*Join us for morning tea.*

9.30am Practice Exhibition –  
Arrangements using  
Summer materials

10.00am **Business Meeting**

10.30am **Ikebana Demonstration**

*Workshop conducted by  
Saoko Burton creating  
Origami (Japanese paper  
folding)*

12.30pm **Close of meeting**

**Guests welcome \$10.00**

For any enquiries please contact our  
Secretary, Faye Brock on email  
[ikebanasydney@hotmail.com](mailto:ikebanasydney@hotmail.com) or  
mobile 0413 564 256

Website:

<https://www.sydneyikebana.org>

## II Sydney Chapter website

We are looking to add contact details of II Sydney Chapter members teaching classes of Ikebana. If you would like to have your name and contact number/email on the website will you please send your details to our Secretary, Faye Brock.

### SALE OF CONTAINERS, ACCESSORIES AND BOOKS

We are very grateful to Mrs Robyn Temple-Smith, who has generously donated her Ikebana equipment as she has now moved into a retirement home.

## II North and Central American Regional Conference

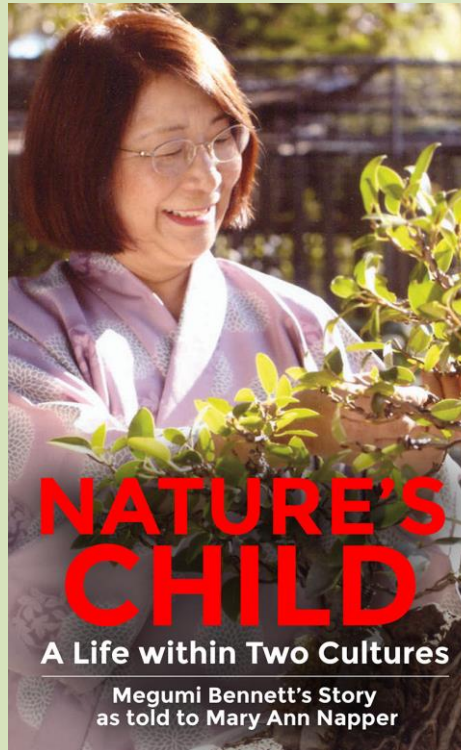
Oct. 27-31, 2019

Give yourself a great Valentine's  
Day Gift

and save \$US100 too!

Register on Valentine's Day and save  
\$100 off the registration fee!

Chairperson – Patricia O'Reilly, of Dallas  
Chapter 13 – [18thncarc@gmail.com](mailto:18thncarc@gmail.com)



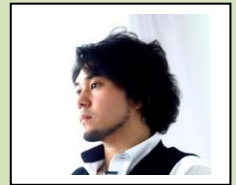
Megumi Bennett has published the story of her life, a most interesting and inspiring book written by Mary Ann Napper. If you would like to obtain a copy of her book please contact the author by email: [marynapper@bigpond.com](mailto:marynapper@bigpond.com) or go to <http://www.maryannnapper.com.au/purchase>

 **IKEBANA** Melbourne,  
Chapter 29  
INTERNATIONAL  
60<sup>th</sup> Anniversary Celebration  
March 2019

In collaboration with the Ichiyo School of  
Ikebana Japan and the Amora Hotel,  
Richmond

### 22-30 March 2019

Visiting guest,  
Ichiyo Iemoto  
designate,  
Naohiro KASUYA



### 27 - 31 March 2019

I.I. Melbourne exhibition at MIFGS will  
feature a collaborative installation with  
the Ichiyo School of Ikebana Japan.  
Theme: Green Bamboo and Autumn

### Thursday 28 March 2019 \*

Demonstration and Gala 60<sup>th</sup>  
Luncheon, with 'Live Ikebana'  
by Ichiyo Iemoto designate, Naohiro  
Kasuya at the Amora Hotel,  
Richmond.  
COST \$85 (Includes 2 course  
lunch + cake, drinks + sake)  
(max 120)

For further information contact:

Sally Wilkinson

[bbionutr@bigpond.net.au](mailto:bbionutr@bigpond.net.au)